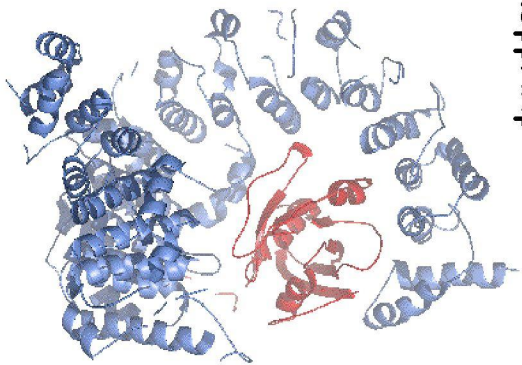
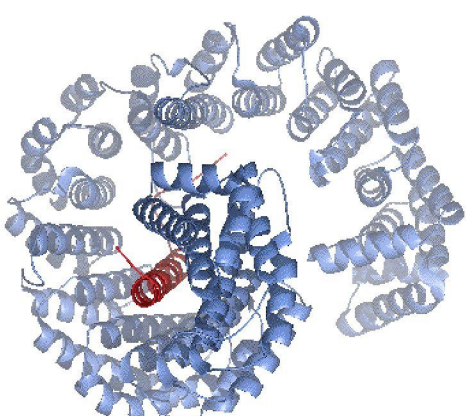


a) Importin $\beta 2$ -RanGppNHp



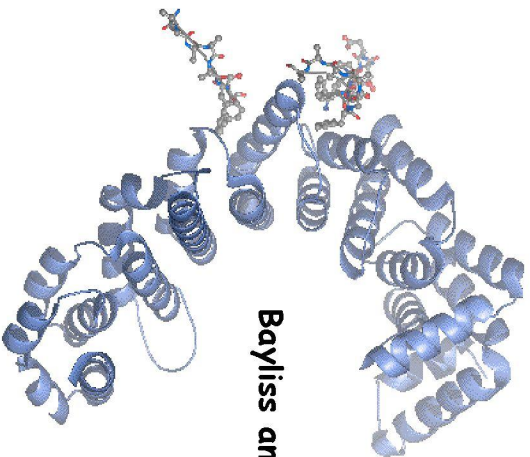
Chook and Blobel 1999

b) Importin $\beta 1$ -IBB domain of importin α



Cingolani *et al.*, 1999

c) Importin $\beta 1$ -FGG repeat



Bayliss and Stewart 2002a

d) HEAT repeat

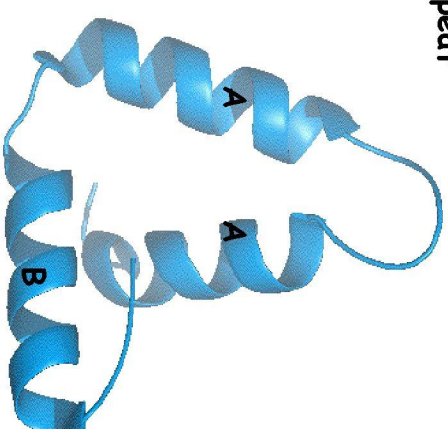


Figure 4. Structure of Imp β 1/2 bound to several ligands.