

Professor Dr Paul A. Yule  
Heidelberg University  
Schulgasse 2  
69117 Heidelberg  
paul.yule@t-online.de  
Tel. 0049 (0)7223 8011229

To Sultan al-Bakri  
Director General of Archaeology & Museums  
Ministry of Heritage & Culture

Heidelberg, 09.07.2017  
file: mhc report 20-21.06.2017

Report for the survey 20 to 21.06.2017 in the southern Sharqiyah

This report complements the one I sent the ministry on 30.05.2017.

On 20.04.2014 I requested permission from the Ministry to work on the finds from al-Safa/‘Uqdat al-Bakrah. On 22.06.2017 I received permission to publish our results in monographic form.

On 20 June Khalifah Khamis al-Rasibi and I used a ministry vehicle to prospect and document in the southern Sharqiyah known and unknown pre-Islamic archaeological sites. Al-Rasibi strongly supported this operation. Its success is due to him.

**20.06.2017 Tuesday 06:46-10:27:** Markah/al-Kamil/al-Wafi wilayat, Fig. 1  
Mostly a settlement site, a few possible Wadi Suq sherds submitted to the MHC. One trilith and several Bronze Age (?) tombs plotted.  
Centre of site UTM 40 Q 717807 m E 2484239 m N  
Waypoints 46-367  
Photos DSC2288-2296, DSC00011-00058

**20.06. Tuesday 13:18-13:24:** Sabt Saite fort/al-Kamil/al-Wafi wilayat, Fig. 2  
A sub-recent period fort, perhaps originating prior to this.  
Centre of site UTM 40 Q 718991 m E 2487030 m N  
Waypoints 384-417  
Photos DSC00058

**20.06. Tuesday 13:24-13:20:** trilith site/al-Kamil/al-Wafi wilayat, Fig. 3  
Centre of site UTM 40 Q 717453 m E 2484084 m N  
Probably Late Iron Age  
Waypoints 407-417  
Photos DSC2284-2287

**20.06. Tuesday 13:18-13:20:** cemetery/al-Kamil/al-Wafi wilayat, Late Iron Age?, Fig. 4  
Three graves sighted in the slope wall.  
Centre of site UTM 40 Q 723203 m E 2489981 m N  
Possibly Late Iron Age

Waypoint none, UTM coordinates: 40 Q 723203 2489981 al-Rasibi-Yule, 20-21.07.2017 southern Sharqiyah Photos DSC00059-00061

**21.06. Wednesday 10:57-12:40:** Saiḥ Aulad Muṭayr/Bani Bu Ḥassan, Fig. 5

Large Bronze Age cemetery

Centre of site UTM 40 Q 737025 m E 2447374 m N

Waypoints 421-503

Photos DSC00062-00072

**21.06. Wednesday 13:22-13:36:** Fort site/al-Kamil/al-Wafi wilayat, Fig. 6

Subrecent and earlier?

Centre of site UTM 40 Q 733148 m E 2448056 m N

Waypoints 504-544

Photos DSC00073-00075

**21.06. Wednesday 13:22-13:36:** Prehistoric cemetery/al-Kamil/al-Wafi wilayat, Fig. 7

Bronze Age, same tomb form as in the al-Juba region

Centre of site 40 Q 733056 m E 2451387 m N

Waypoints 545-636

Photos DSC00077-00088

**21.06. Wednesday 14:50-14:56:** Grave of ‚Kebikeb‘/al-Rakī/al-Qabil wilayat, Fig. 8

Subrecent-recent

Centre of site 40 Q 699489 m E 2520140 m N

Waypoint 637

Photo DSC00089-00090 al-Rasibi-Yule, 20-21.06.2017 southern Sharqiyah

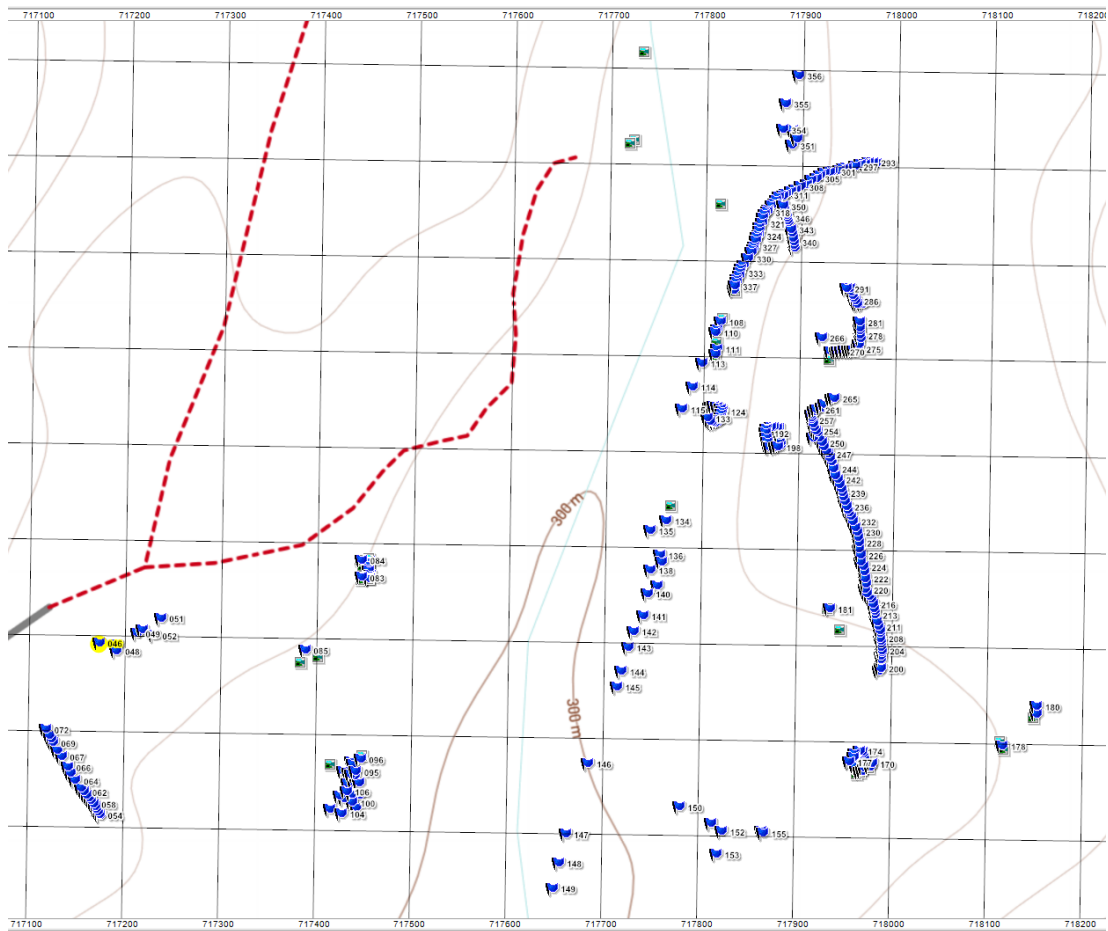


Fig. 1a. Markah/al-Kamil/al-Wafi Wilayat



Fig. 1b. Al-Kamil al-Wafi/Markah dsc 00048





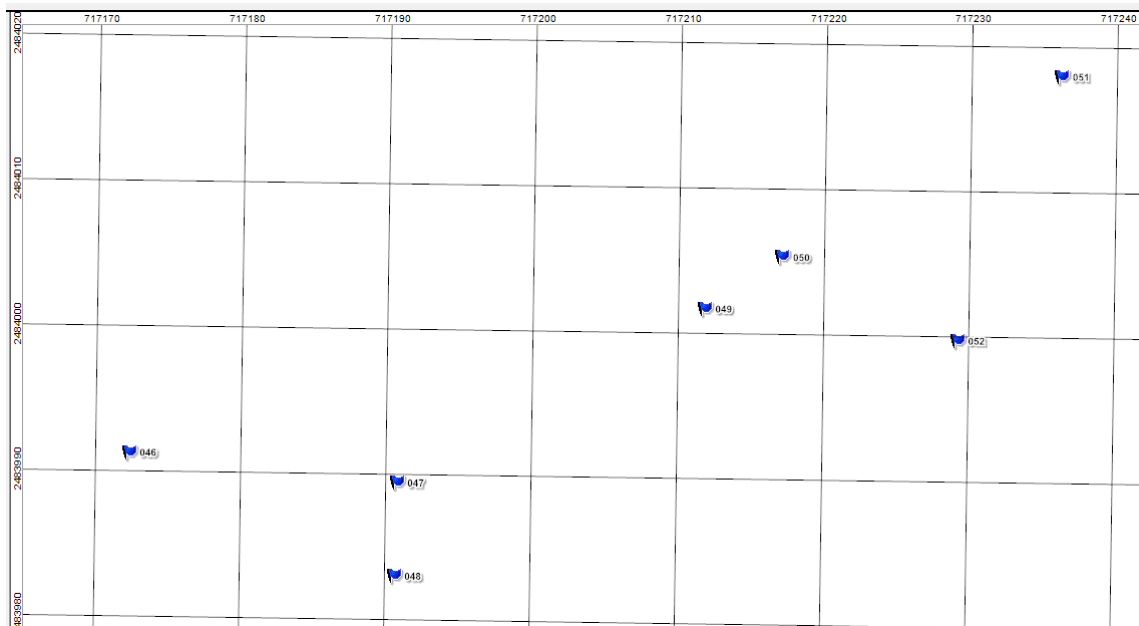


Fig. 3a. al-Kamil al-Wafi, trilith site.



Fig. 3b. al-Kamil al-Wafi, trilith site, dsc 2285.



Fig. 4a. Late Iron Age? Cemetery site, place-name unknown, al-Kamil al-Wafi Wilayat (40Q 723203, 2489981)

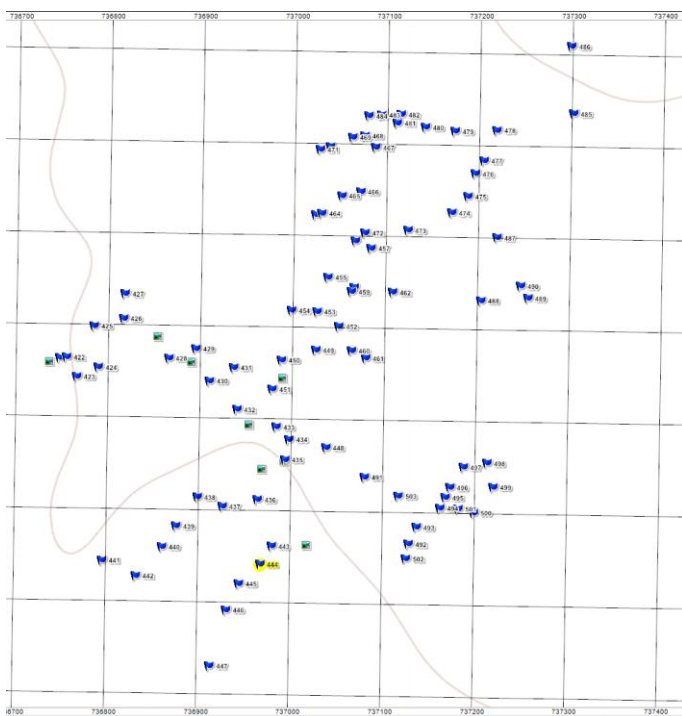
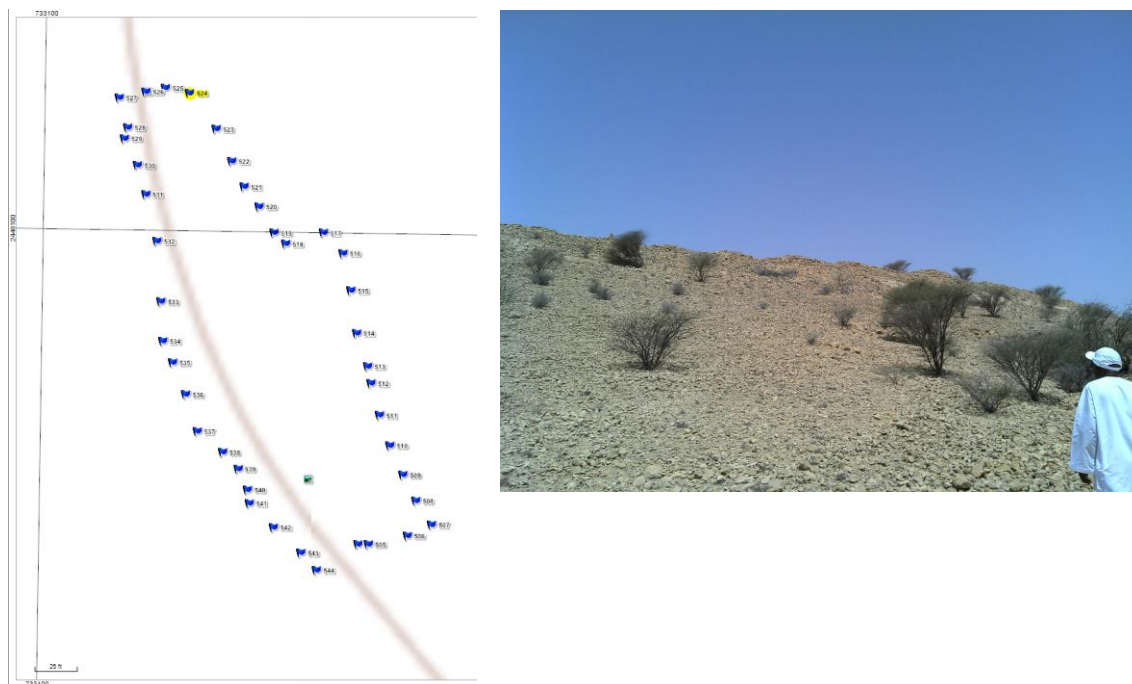
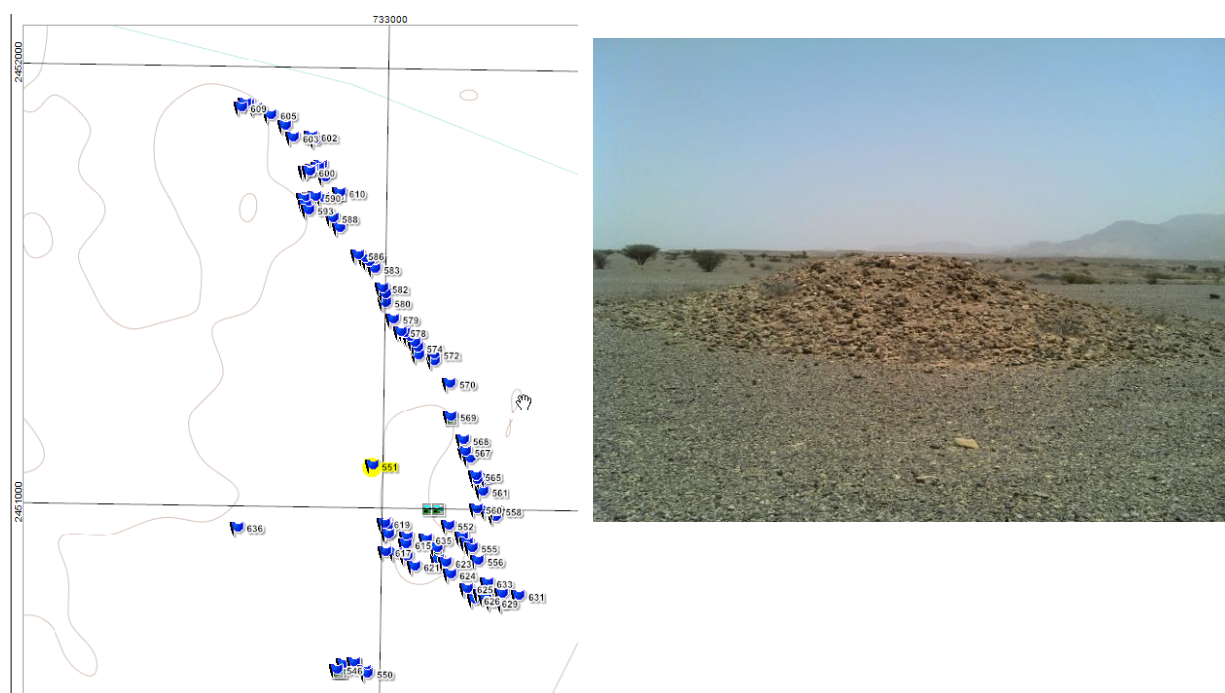


Fig. 5a-5c. , al-Kamil al-Wafi Wilayat, Saih Aulad Muṭayr, dsc 00072, 67



Figs. 6a, 6b. Al-Kamil al-Wafi Wilayat, fort site, dsc00073.



Figs. 7a, 7b. Al-Kamil al-Wafi Wilayat, fort site, dsc00077.



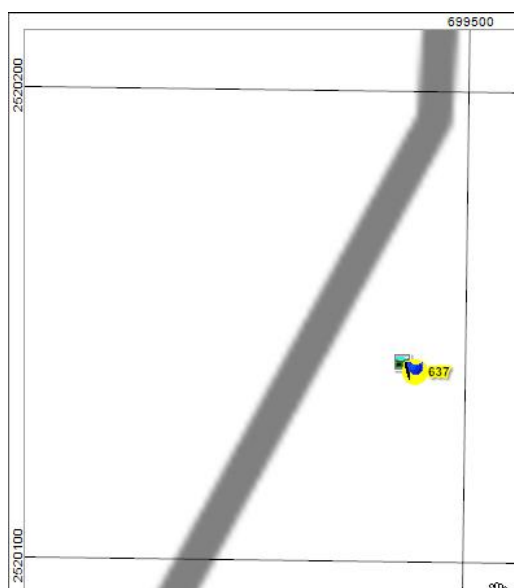


Fig. 8a, 8b. al-Rakkā'/Ibrā' wilayat, grave of ,Kebikeb'